



# Road Safety Performance Local Government Roads 2014-2018

February  
2021

## All of Western Australia

### Road Network

	Length		Travel / Use	
	km	%	MVKT <sup>1</sup>	%
State Roads	18,572 km	12.6%	16,588 MVKT <sup>1</sup>	59.4%
Local Roads	128,454 km	87.4%	11,321 MVKT <sup>1</sup>	40.6%

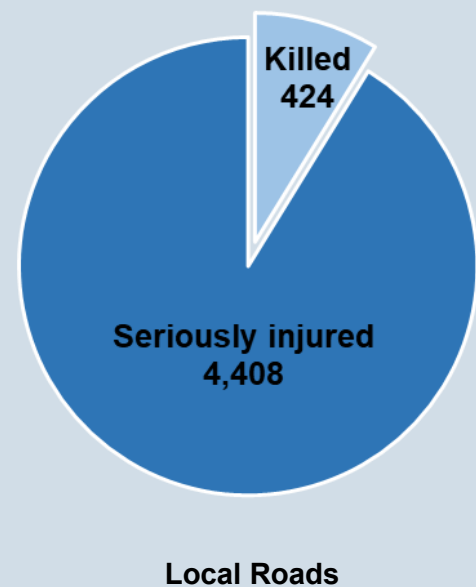
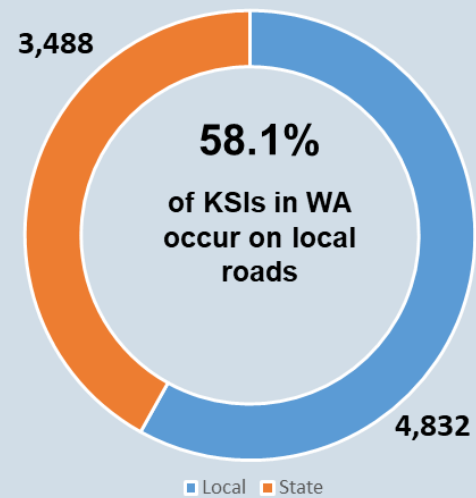
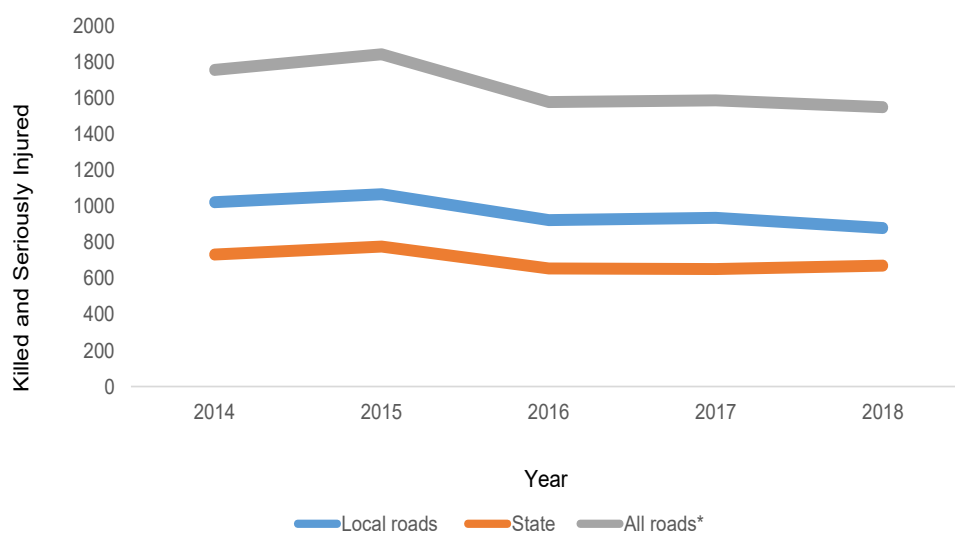
<sup>1</sup>MVKT data from ABS via MRWA and is for 2020. Originally cited by the Road Safety Commission.

### Safety Performance

State Roads	3,488 KSI	41.9%	26.6 / 100,000 <sup>2</sup> pop.
Local Roads	4,832 KSI	58.1%	36.9 / 100,000 <sup>2</sup> pop.

<sup>2</sup>Average Annual KSI rate.

### Trend



### Average Cost Per Annum

**947.7 \$M**   
Local Roads

Source: Government of Western Australia, Road Safety Commission, October 2020, unless otherwise stated. Data to be read in conjunction with supporting notes.



RoadWise®



WALGA

[www.roadwise.asn.au](http://www.roadwise.asn.au)

# On the Local Road Network 2014-2018

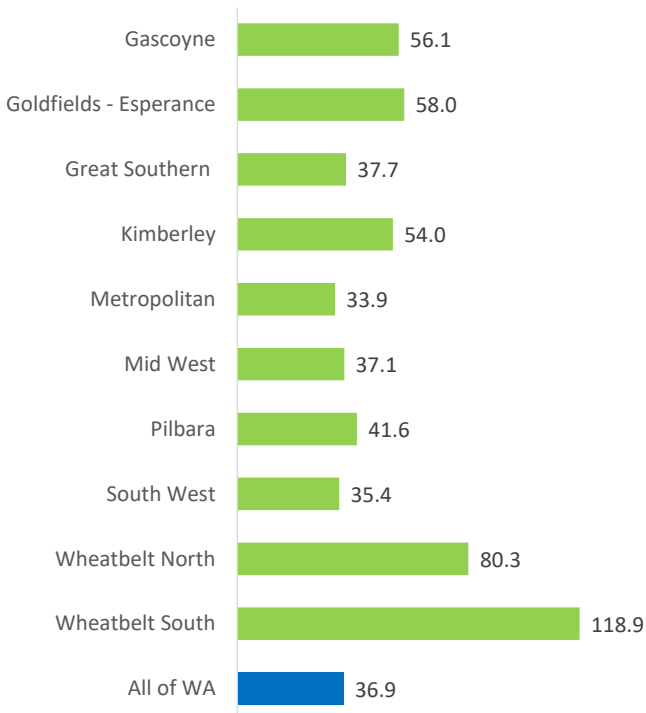


## Killed and Seriously Injured

**3,360**   
Metro

**1,472**   
Regional

## Average Annual KSI Rate per 100,000 Population by Region

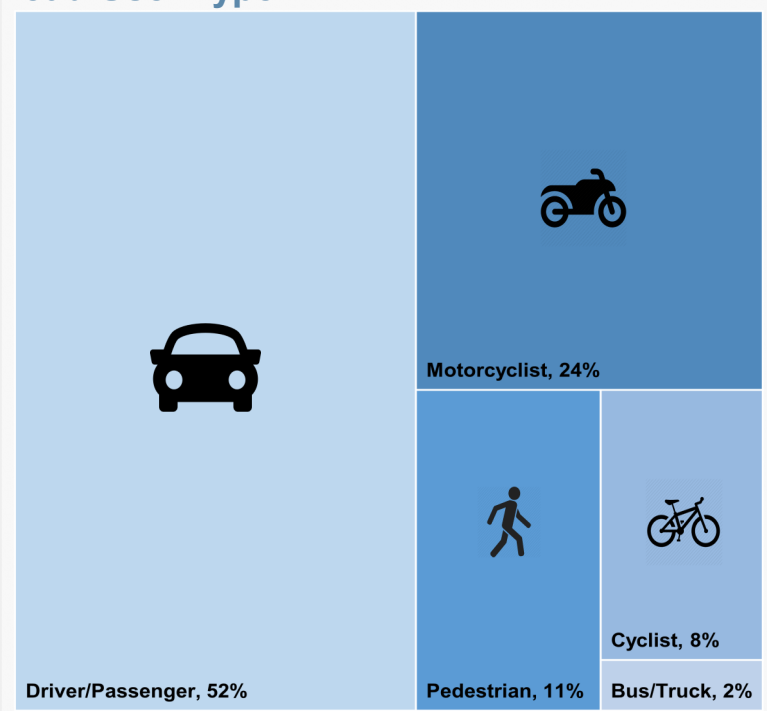


## Crash Type

Crash Type	KSI	% KSI crashes
Off Carriageway. Hit object*	1,009	20.9%
Right Angle	998	20.7%
Hit Pedestrian	528	10.9%
Non-collision	481	10.0%
Rear End	479	9.9%
Right Turn Thru	472	9.8%
Head On	228	4.7%
Sideswipe	168	3.5%
Off Carriageway. Non-collision*	160	3.3%
Other	152	3.1%
Hit Object	116	2.4%
Hit Animal	41	0.8%
<b>Total</b>	<b>4,832</b>	<b>100%</b>

\* See supporting notes.

## Road User Type



## Priority Treatment Areas

